



LIFE LIGHT™

EMERGENCY LIGHTING HAS CHANGED

- **30% LESS FITTINGS – The LifeLIGHT PRO**

Market leading D40 classification offers 60% greater coverage than existing Premium products, meaning significant cost savings. On average a building requires 30% less fittings.

- **SIGNIFICANT MAINTENANCE SAVINGS**

Installing LifeLIGHT's mean there are fewer fittings to maintain, the LED lamp source never needs replacement and the battery is less than one third the size and half the replacement cost.

- **50% LESS ENERGY USE – LifeLIGHT's**

Consume one half of the standby power of existing 10 watt halogen QI fittings.

- **DESIGN FLEXIBILITY – LifeLIGHT PRO**

Is only 60mm diameter in square or round head. Standard in black or white but available in any colour without affecting emergency spacing performance.

- **LIFETIME LAMP WARRANTY – LifeLIGHT's**

Come with a lifetime lamp warranty and a three year warranty on the entire fitting.



LifeLIGHT - PRO

Dimensions

60mm x 60mm
Square or Round



LifeLIGHT

Dimensions

95mm Round



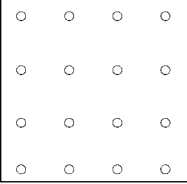
NSW: (02) 9674 8944 VIC/TAS: (03) 9532 0566
SA/WA/NT: (08) 8339 1092 QLD: (07) 3200 2555

www.clevertronics.com.au

LOWER YOUR INSTALLATION COSTS:

Example: 36m x 36m area. 2.7m ceiling height.

Economy



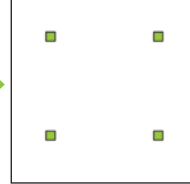
Use less fittings. You need to install less fittings to comply with the BCA and Australian Standards when compared with the old recessed halogen emergency lights. Fewer fittings to install = less materials cost and less labour time.

Premium Halogen / Standard LifeLIGHT



In this example, using Standard LifeLIGHT or Premium Halogen instead of Economy Halogen will reduce the number of fittings required from 16 to 9.

LifeLIGHT PRO



Only 4 of the LifeLIGHT PRO are required.

With less fittings installed, there are also lower maintenance and energy costs.

ORDERING INFORMATION

Detailed specification details including IES files available for download from the Clevertronics website.

LIFELIGHT RANGE	TESTING OPTIONS			Photometrics	
Description	Standard	Clever-test	Zoneworks	C ₀	C ₉₀
<i>Standard features: Dual-rate charge for longer battery life, high-temp Ni-Cd batteries, lifetime lamp warranty, recessed c/w flex & plug, no dome required, high brightness white LED's, ultra low stand-by energy consumption.</i>					
PRO					
Recessed Round	PLIFE-PRO	DLIFE-PRO	ZLIFE-PRO	D40	D40
Recessed Round Black	PLIFE-PRO-BLK	DLIFE-PRO-BLK	ZLIFE-PRO-BLK	D40	D40
Recessed Square	PLIFE-PRO-SQ	DLIFE-PRO-SQ	ZLIFE-PRO-SQ	D40	D40
Recessed Square Black	PLIFE-PRO-SQ-BLK	DLIFE-PRO-SQ-BLK	ZLIFE-PRO-SQ-BLK	D40	D40
Surface Mounted Square	PLIFE-PRO-SMS	DLIFE-PRO-SMS	ZLIFE-PRO-SMS	D40	D40
Surface Mounted Square Black	PLIFE-PRO-SMS-BLK	DLIFE-PRO-SMS-BLK	ZLIFE-PRO-SMS-BLK	D40	D40
Surface Mounted Cylinder	PLIFE-PRO-SMC	DLIFE-PRO-SMC	ZLIFE-PRO-SMC	D40	D40
Surface Mounted Cylinder Black	PLIFE-PRO-SMC-BLK	DLIFE-PRO-SMC-BLK	ZLIFE-PRO-SMC-BLK	D40	D40
Small Hole Adaptor Plate	1140010	88mm Ø to suit retro-fitting into hole cut-outs up to 78mm			
Large Hole Adaptor Plate	1140020	146mm Ø to suit retro-fitting into hole cut-outs up to 130mm			
STANDARD					
Recessed Round	PLIFE	DLIFE	ZLIFE	D25	D25
Recessed Round Black	PLIFE-BLK	DLIFE-BLK	ZLIFE-BLK	D25	D25

Nb: Factory standard colours are white or black, however face-plate can be removed to be painted any colour without affecting performance and AS2293 compliance. Please contact Clevertronics for information.



DIMENSIONS (PRO):

Head: 60mm x 60mm (square) 60mm diameter (round)
Hole cut-out: 51mm diameter (square and round)

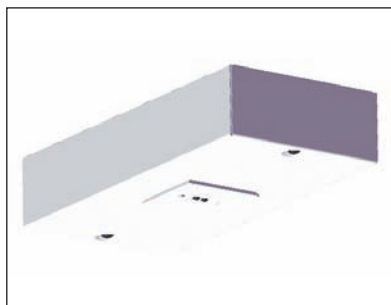
DIMENSIONS (STD):

Head: 95mm diameter
Hole cut-out: 85mm diameter- suitable for plaster or inaccessible ceilings.

This product is a REGISTERED DESIGN



Retro-fit adaptor plates available for existing small and large hole cut-outs



Surface mounted square
LxWxH (mm): 267 x 128 x 55



Surface mounted cylinder
Diameter 127 (mm) x 252 Long